




2 BHK HOMES
VIBRANT RESIDENTIAL
COMMUNITY

A vibrant residential community!

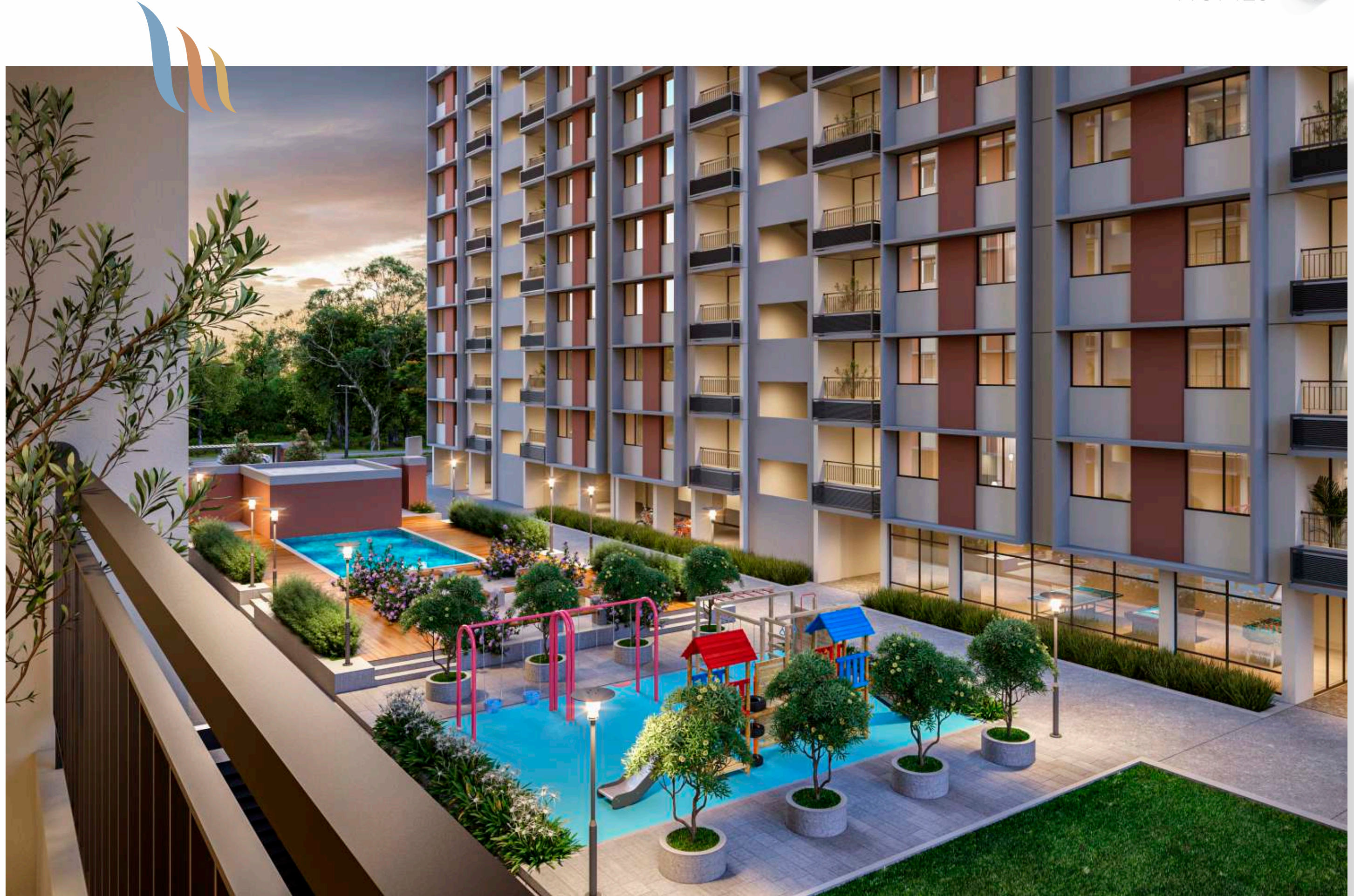


Welcome to the 5th edition of Maher Homes. With its crisp lines and modern styling, it's a unique addition to this fast developing neighborhood - and one that offers all the conveniences and comfort of contemporary living.

You'll experience spacious planning with an emphasis on natural light and contemporary finishes, that have been carefully hand-chosen for their matchless appeal.

MAHER
HOMES 

A vehicle free central plaza !



HOLLOW PLINTH PLAN

- | | | | |
|----|-------------------------|----|---------------|
| 01 | DROP OFF & PICK-UP ZONE | 06 | GYM |
| 02 | SWIMMING POOL | 07 | PARTY LOUNGE |
| 03 | CHILDREN PLAY AREA | 08 | YOGA ROOM |
| 04 | GARDEN | 09 | TODDLER'S DEN |
| 05 | GAME ZONE | | |



There is something for everyone!

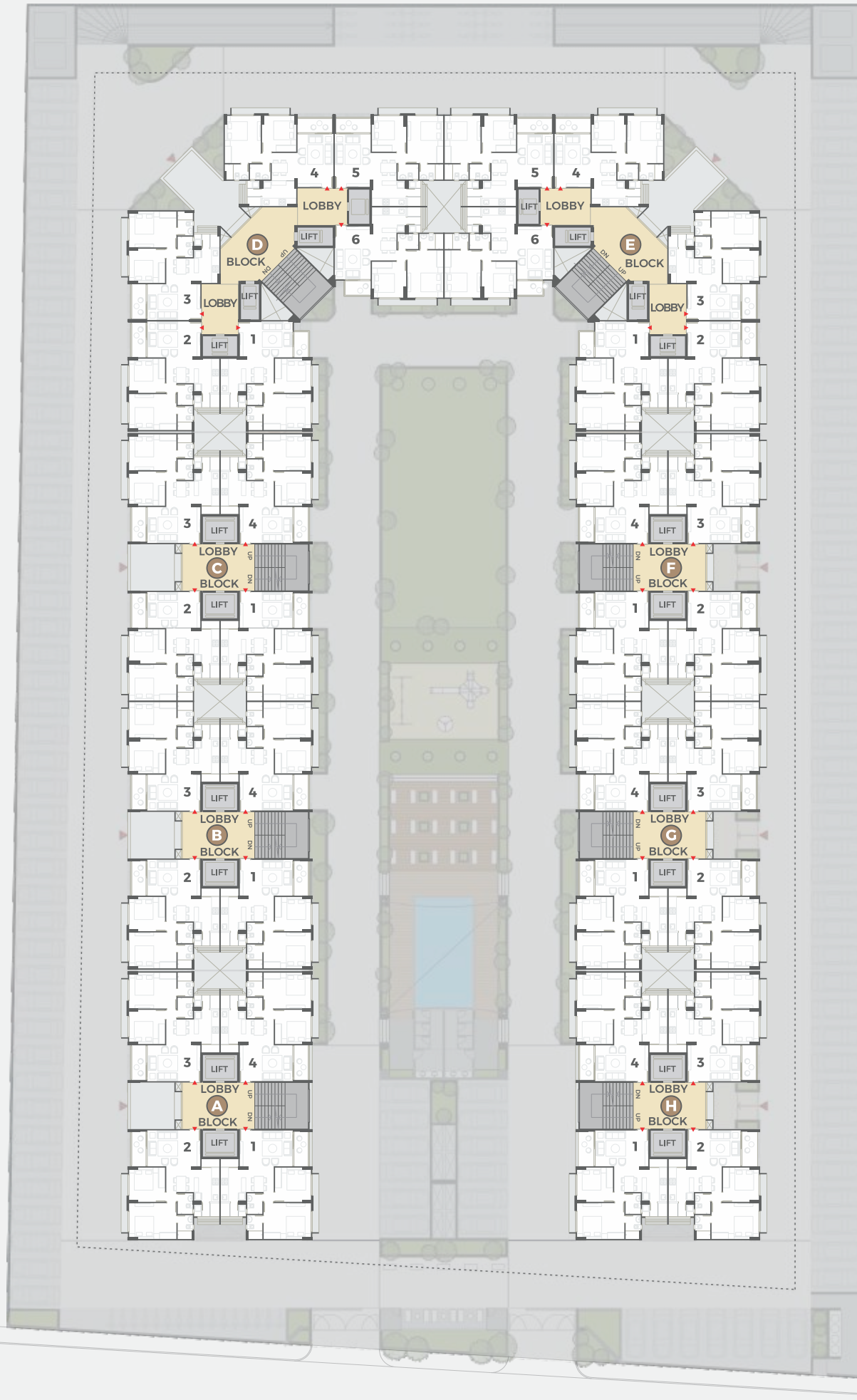


There is something for everyone at Maher Homes 5. Common spaces are designed under each block to cater to a lifestyle where spaces become an extension of your home.

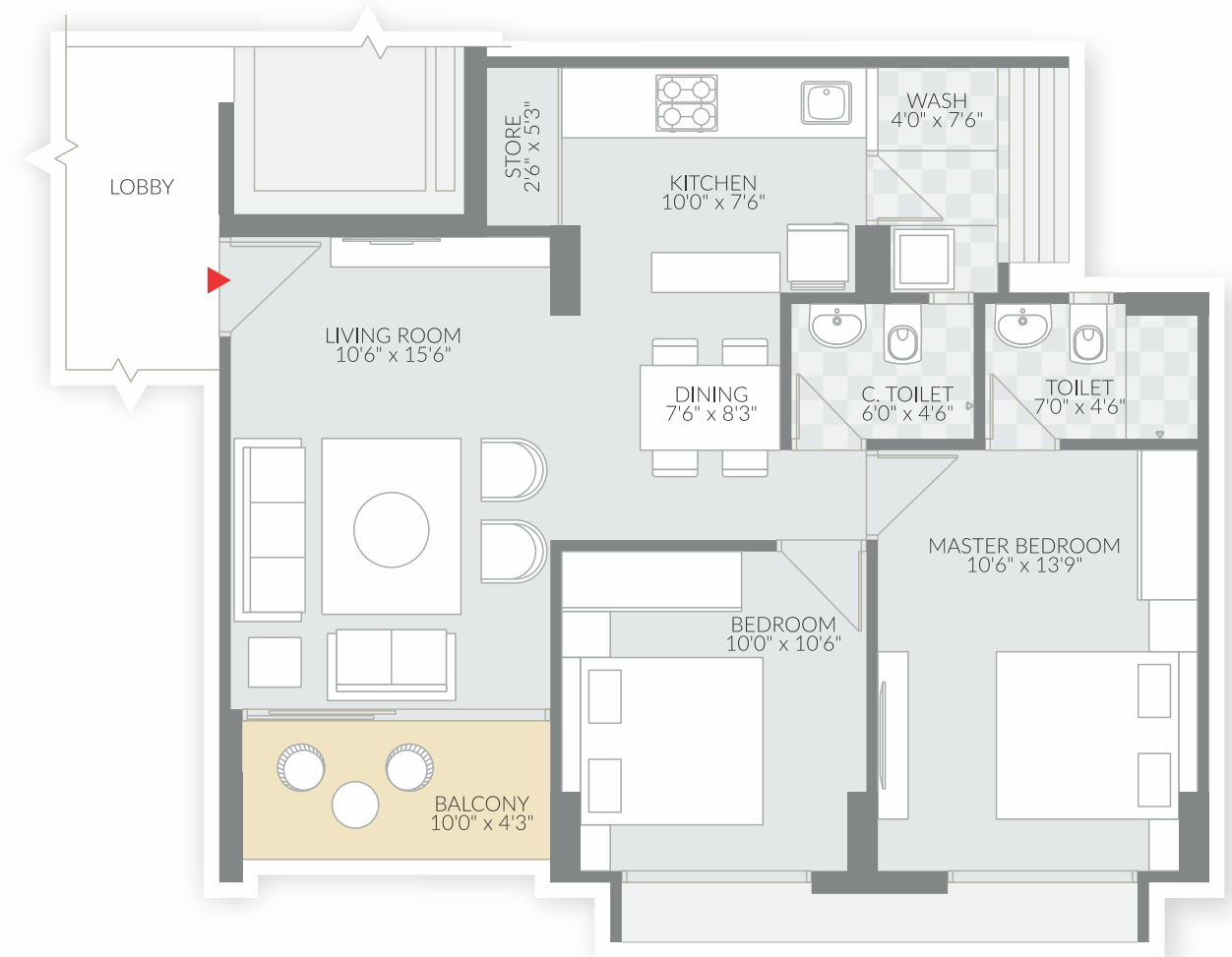
A lounge with library, a toddlers den, a fully functional gymnasium, yoga room and a indoors games area, you name it and we have it for your relaxation and rejuvenation.

TYPICAL FLOOR PLAN
(1ST TO 14TH FLOOR)

TYPE 1
UNIT PLAN



- TOWER - A: 1, 2, 3 & 4
- TOWER - B: 1, 2, 3 & 4
- TOWER - C: 1, 2, 3 & 4
- TOWER - F: 1, 2, 3 & 4
- TOWER - G: 1, 2, 3 & 4
- TOWER - H: 1, 2, 3 & 4



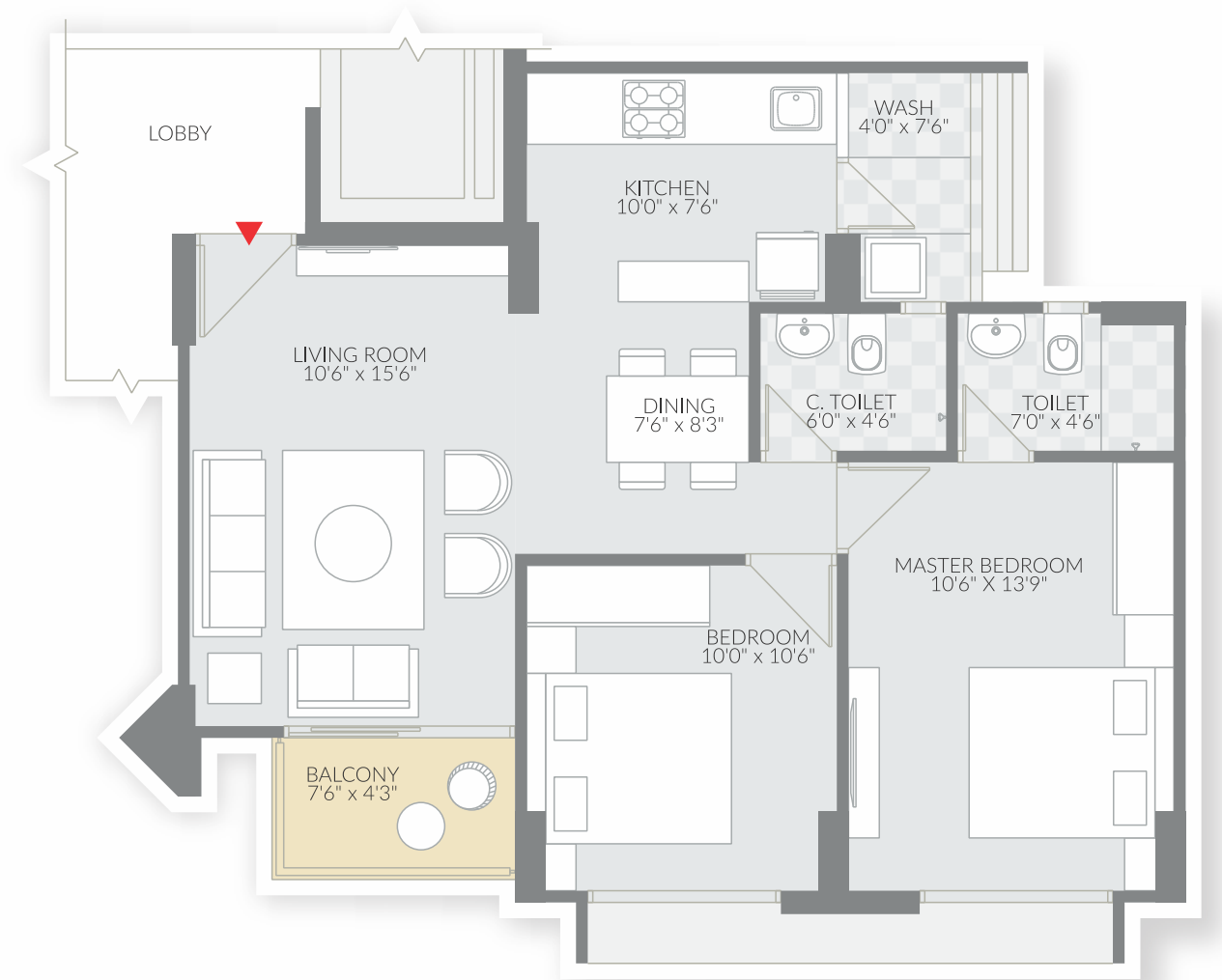
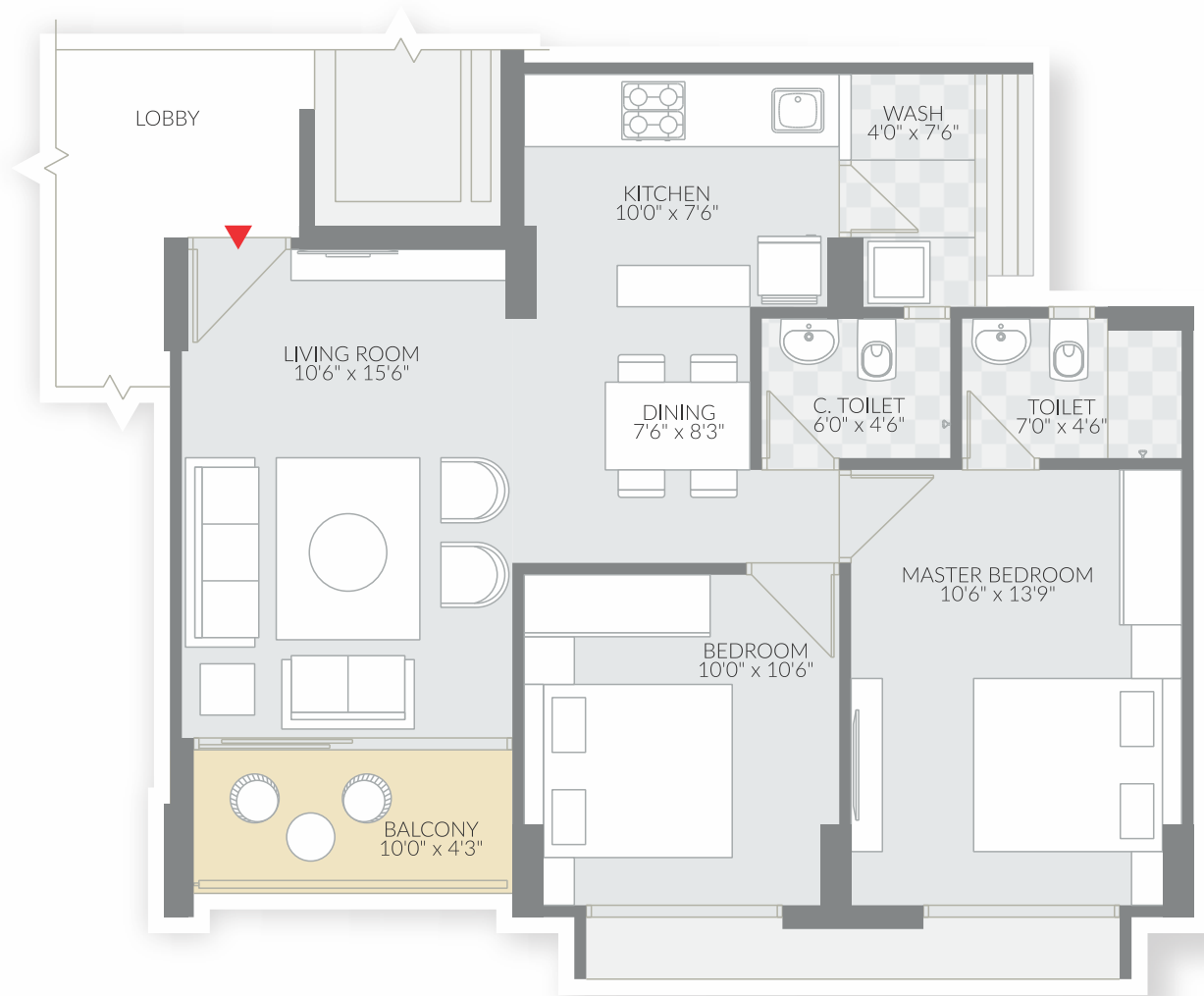
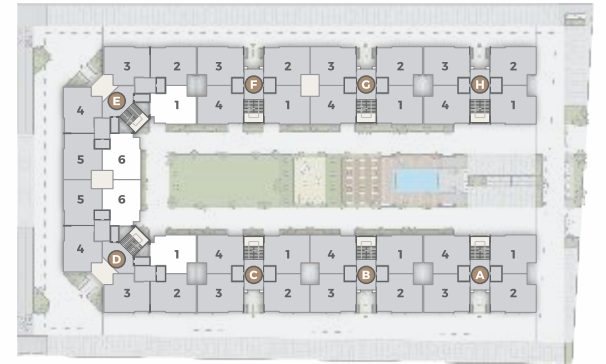
TYPE 2
UNIT PLAN

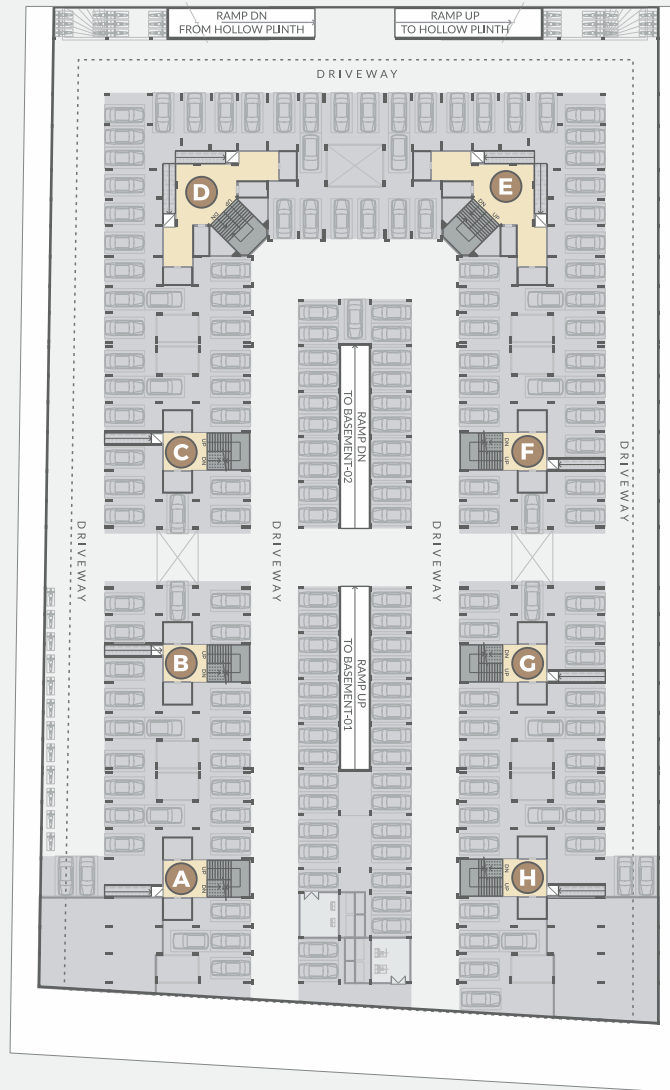
TYPE 3
UNIT PLAN

TOWER - D : 2, 3, 4 & 5
TOWER - E : 2, 3, 4 & 5

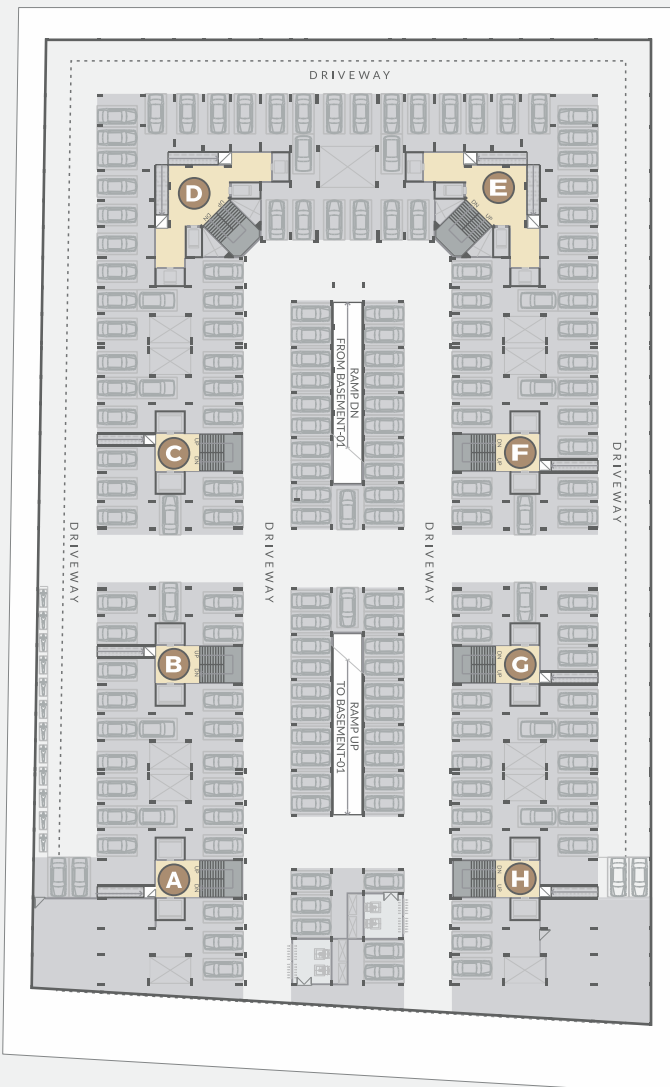


TOWER - D : 1 & 6
TOWER - E : 1 & 6





FIRST
BASEMENT
PLAN



SECOND
BASEMENT
PLAN

AMENITIES



SWIMMING
POOL



GARDEN
AREA



VEHICLE FREE
ZONE



CHILDREN
PLAY AREA



STATE OF THE
ART GYM



GAME
ZONE



PARTY
LOUNGE



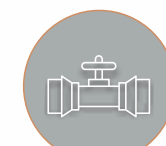
YOGA
ROOM



TODDLERS
DEN



24 HOURS
SECURITY



PRESSURE
SYSTEM FOR
WATER SUPPLY



RAIN WATER
HARVESTING



GENERATOR BACKUP
FOR COMMON
UTILITIES



CCTV AT
GROUND
LEVEL



GREY WATER
TREATMENT PLANT



DROP OFF &
PICK-UP ZONE

SPECIFICATIONS

WALL FINISH

Internal smooth finished plaster with 2 coat of birla putty

Exterior double coated sand faced plaster with acrylic paint

FLOORING

Double charge Vitrified or equivalent flooring in living and dining areas, kitchen and all bedrooms

Kota stone or similar in wash area

KITCHEN

Polished natural granite platform

Stainless steel kitchen sink

Vitrified tiles dado up to lintel level on wall above kitchen platform

DOORS & WINDOWS

Decorative wooden main door with wooden frame & brass / s.s. fittings

Laminated flush doors with wooden frame in all bedrooms and bathrooms & brass / s.s. fittings

Fully glazed powder coated aluminium sliding windows with stone revile

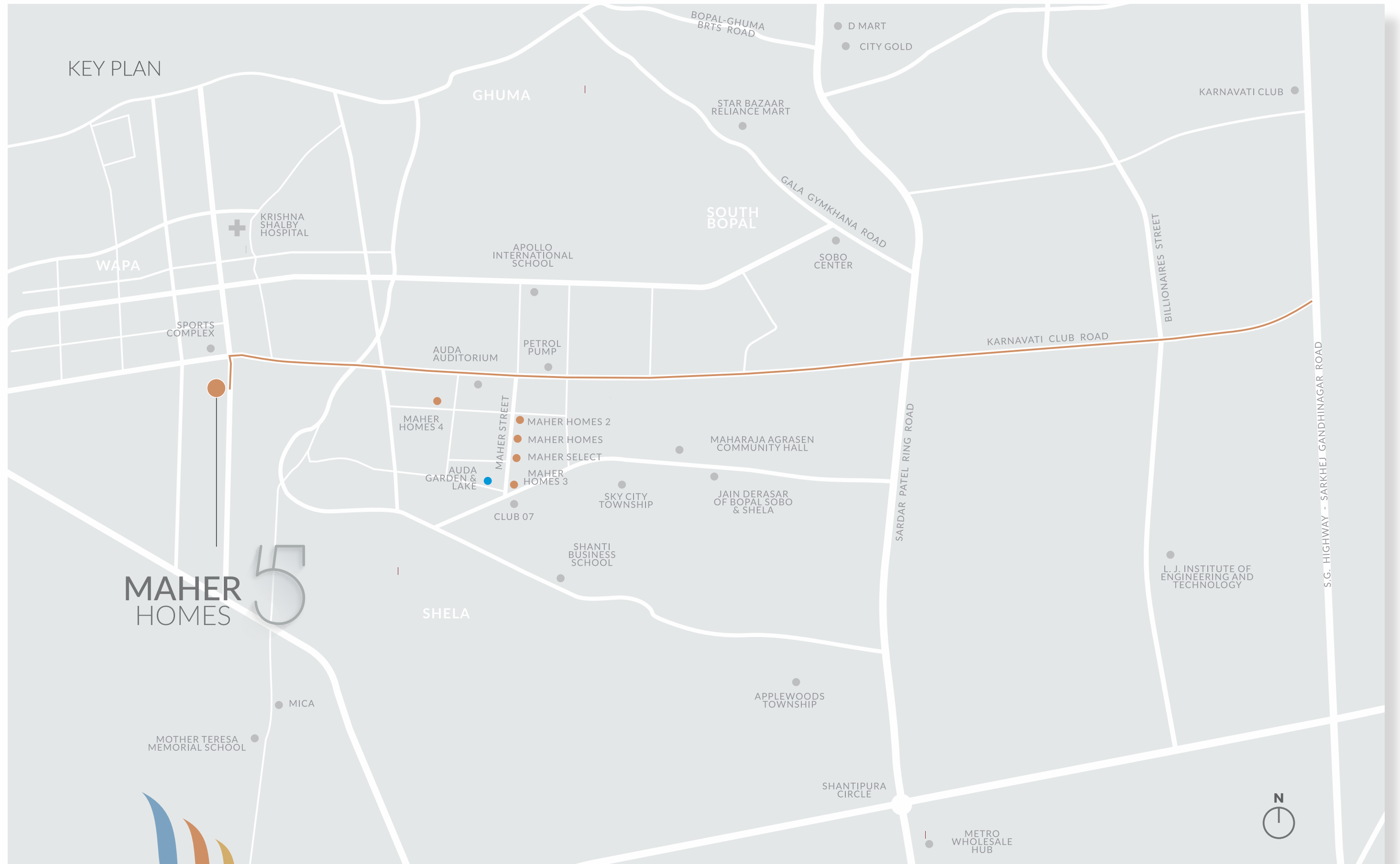
BATHROOMS

Ceramic tile flooring in all bathrooms

Coloured tiles dado up to lintel level

ELECTRIFICATION

Concealed copper wiring with adequate A.C, geyser and telephone points in each unit



MAHER HOMES 5

A city at your doorstep

Imagine having tree-lined streets, spectacular architecture and an inexhaustible assortment of community halls, sports complexes and large roads for connectivity.

That's the reality of living at WAPA. It's a neighborhood continuously on the move towards development. New green spaces, recreation opportunities and a flurry of retail growth bring endless potential to this perennially desirable setting.






VISHWANATH
A DUSHYANT PANDYA VISION

DEVELOPER
VISHWANATH ESTATE DEVELOPERS

Sales Office: Plot No. 14, Maher Street, Near Club O7,
Off S.P. Ring Road, Shela, Ahmedabad 380058.
Tel.: +91 98797 89039

Corporate Office: Inceptum, Block-B, 7th Floor, Opp. Hotel Planet Landmark,
Ambli-Bopal Road, Ahmedabad 380058.
Tel.: +91 98797 89681
Timings: 10 am – 6pm all days | Tuesday Closed

Call: 1 800 890 9080

 info@vishwanathrealtor.com
 www.vishwanathrealtor.com
 [/vishwanathrealtor](https://www.facebook.com/vishwanathrealtor)

www.gujrera.gujarat.gov.in
RERA Reg. No.: PR/GJ/AHMEDABAD/SANAND/AUDA/RAA10325/170622

Architect
Groundwork Architecture
Ph.: 079 26926004

Interior Designers
Naibu Design
Ph.: +91 99099 47512

Structural Consultant
PNL Engineering Consultants Pvt Ltd
Ph: 079 26446318

Plumbing Consultant
Vraj Sanitation
Ph.: 0265 2487479

NOTES

- This brochure is meant for private circulation only.
- The developer reserves the rights to change, revise or make any additions, omissions, alterations or modifications to the scheme as a whole, or part thereof at their sole discretion without any prior notice. Such changes will be binding on all members.
- All dimensions presented herein are approximate and measurements are made from unfinished surfaces.
- External changes of any sort will not be permitted. Internal changes may be permitted with prior written permission from the developer and will be charged separately.
- This brochure is meant for the purposes of presentation only, and should not be treated as any form of binding document, offer or legal contract.
- Site development is subject to clearances from AUDA and other government entities.
- Whilst reasonable care has been taken in the preparation of the brochure, the developer and its agents shall not be held responsible for any inaccuracies in its contents.